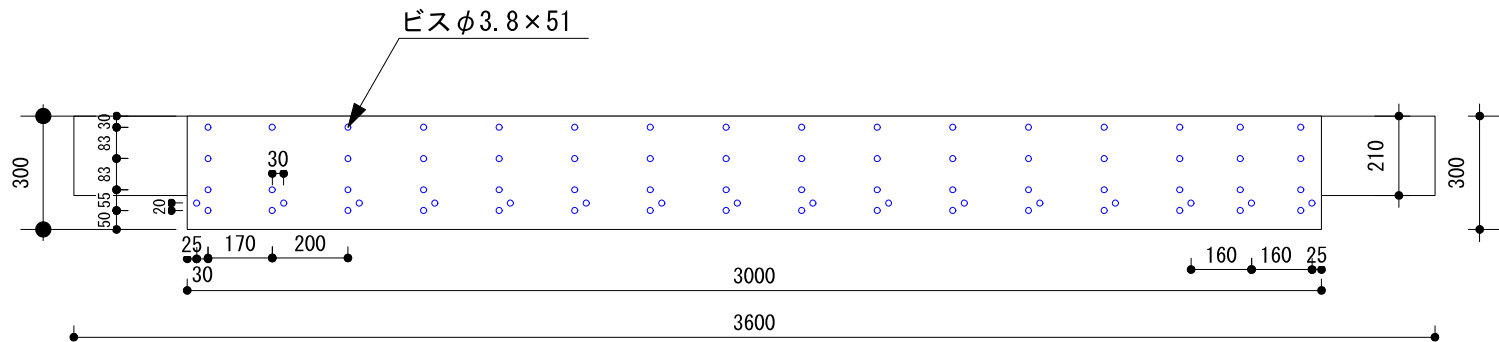


図1 断面図 (梁)
(荷重支持部材150x210)

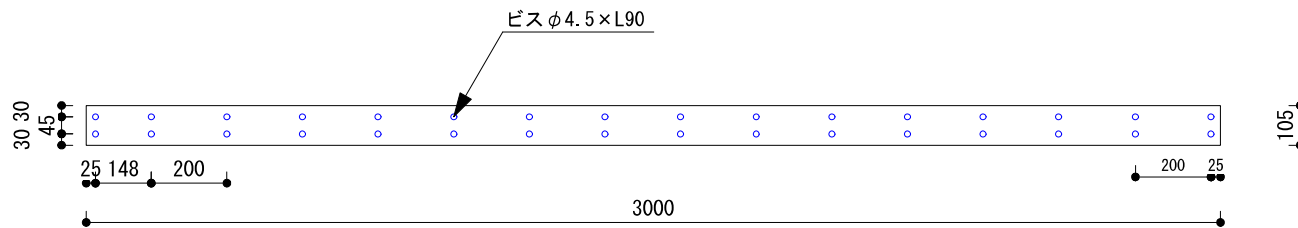
側面 割付図

難燃薬剤処理LVL厚60



底面下張材 割付図

難燃薬剤処理LVL厚60



底面上張材 割付図

難燃薬剤処理LVL厚30

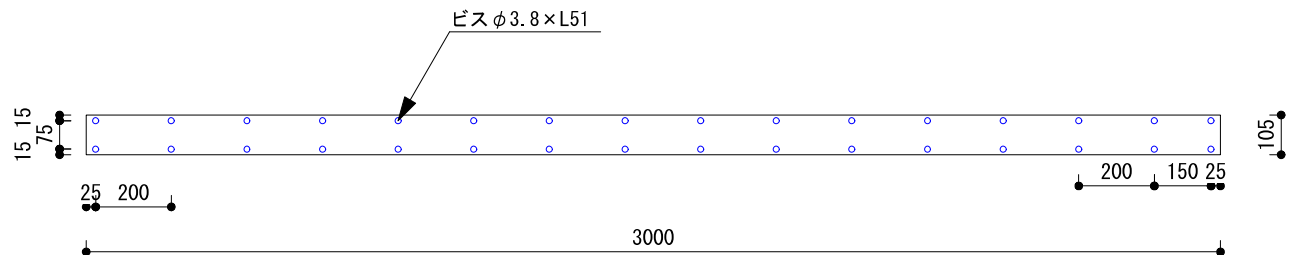


図2 被覆材ビス位置 (105 x 210梁)

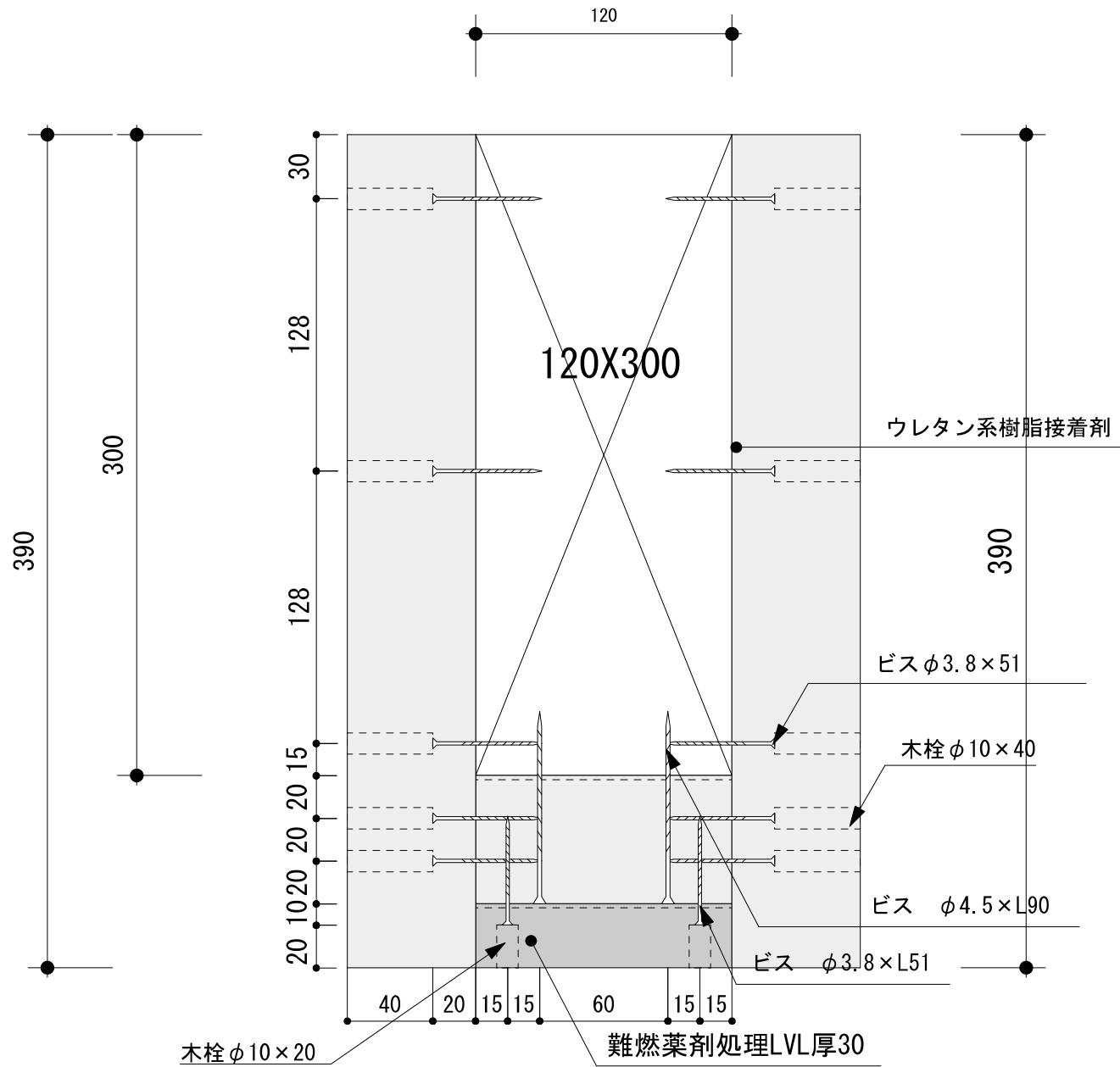
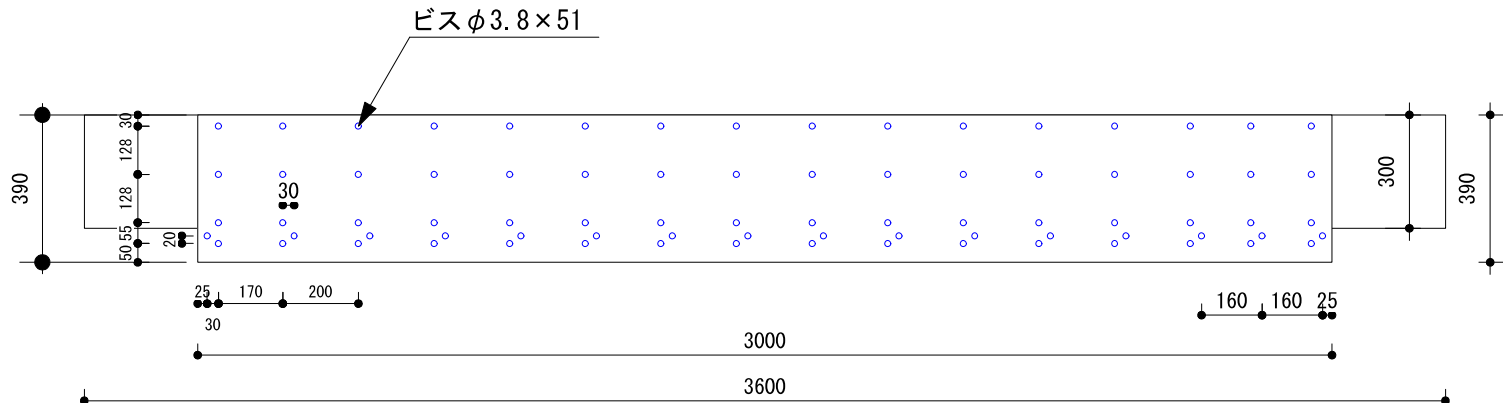


図1 断面図(梁)
(荷重支持部材120x300)

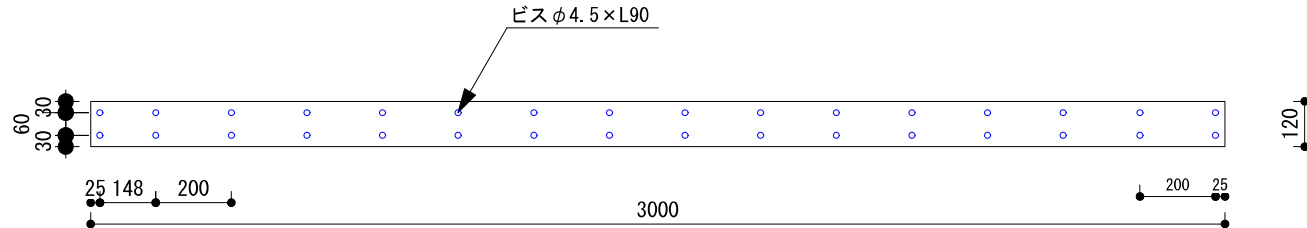
側面 割付図

難燃薬剂処理LVL厚60



底面下張材 割付図

難燃薬剂処理LVL厚60



底面上張材 割付図

難燃薬剂処理LVL厚30

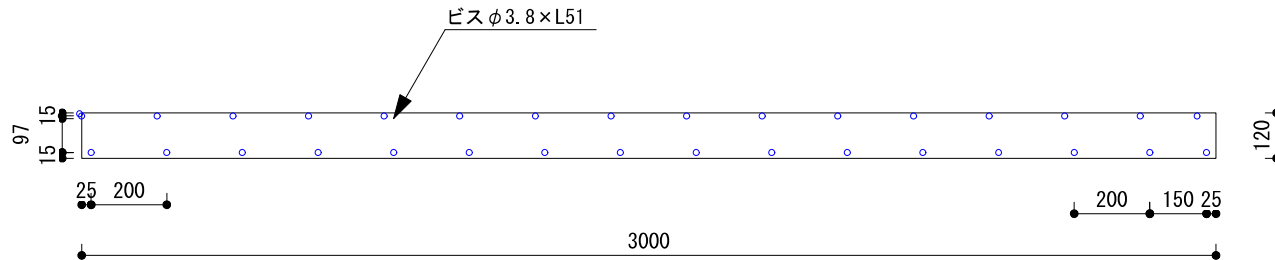


図2 被覆材ビス位置 (120 x 300梁)

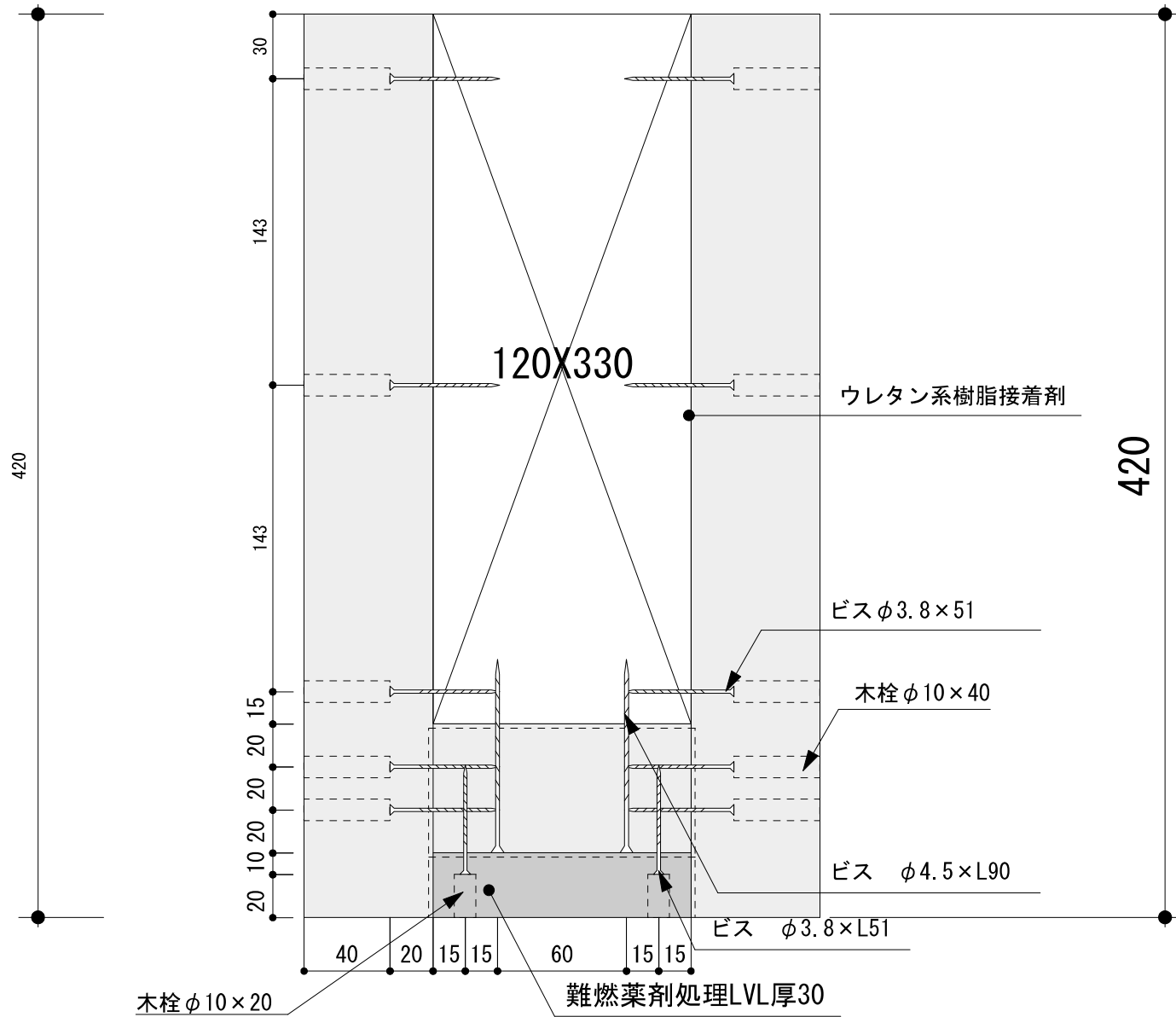
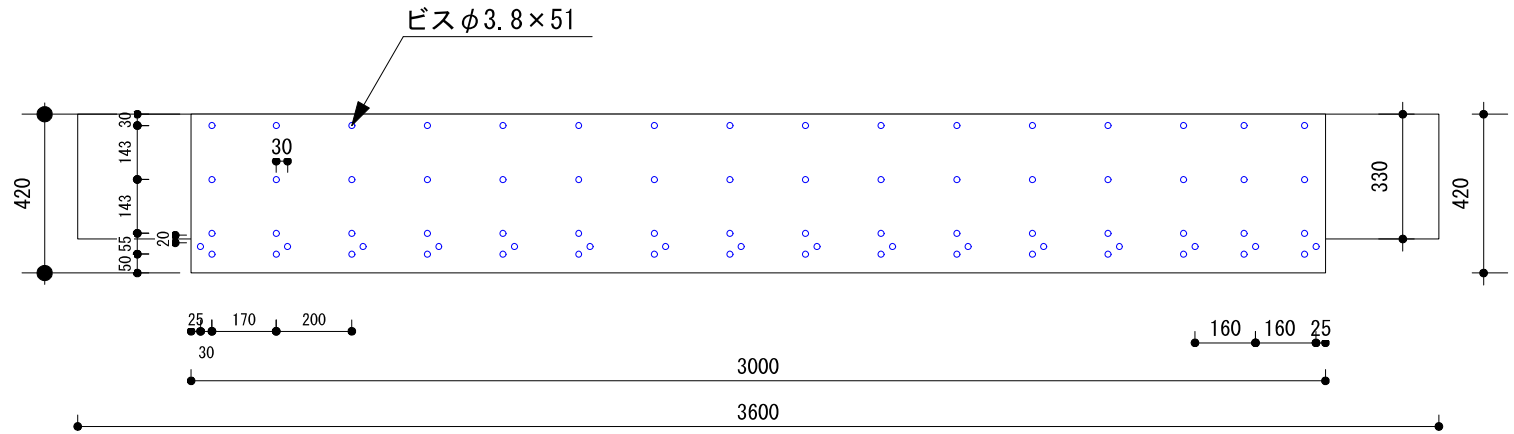


図1 断面図(梁)
(荷重支持部材120x330)

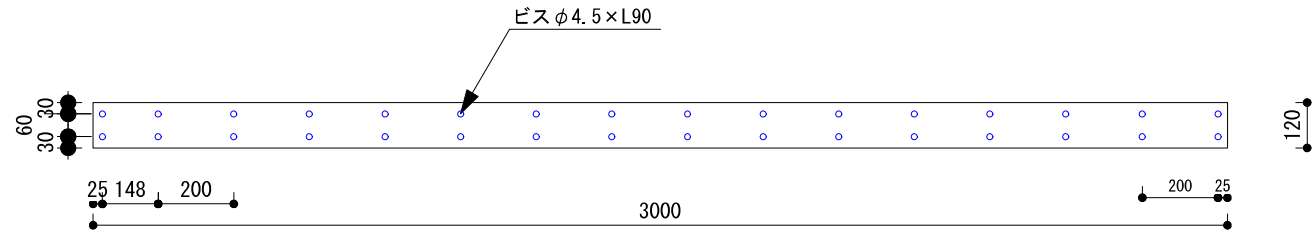
側面 割付図

難燃薬剤処理LVL厚60



底面下張材 割付図

難燃薬剤処理LVL厚60



底面上張材 割付図

難燃薬剤処理LVL厚30

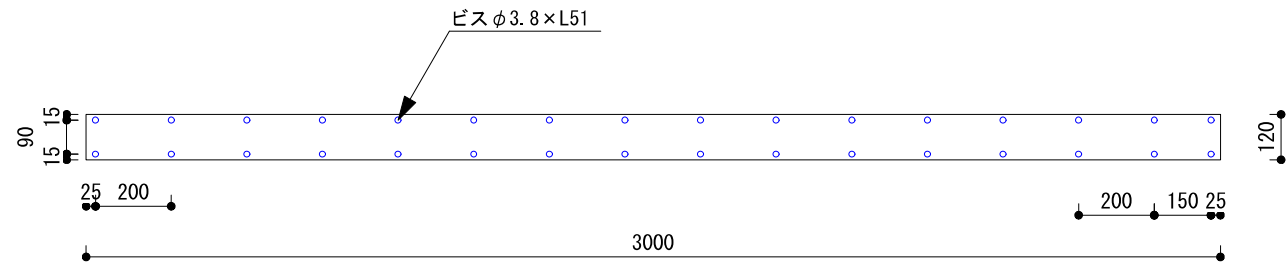


図2 被覆材ビス位置 (120 x 330梁)

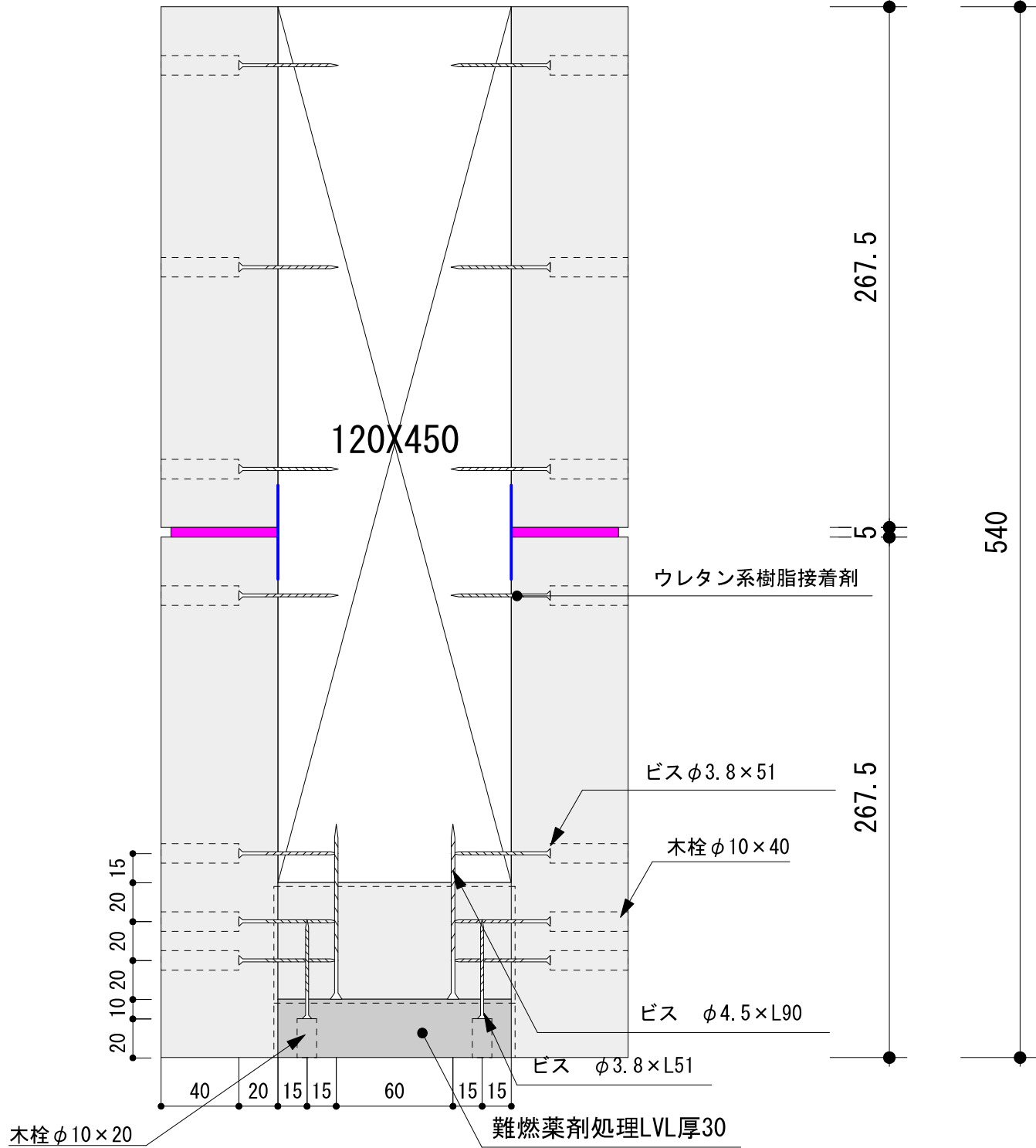
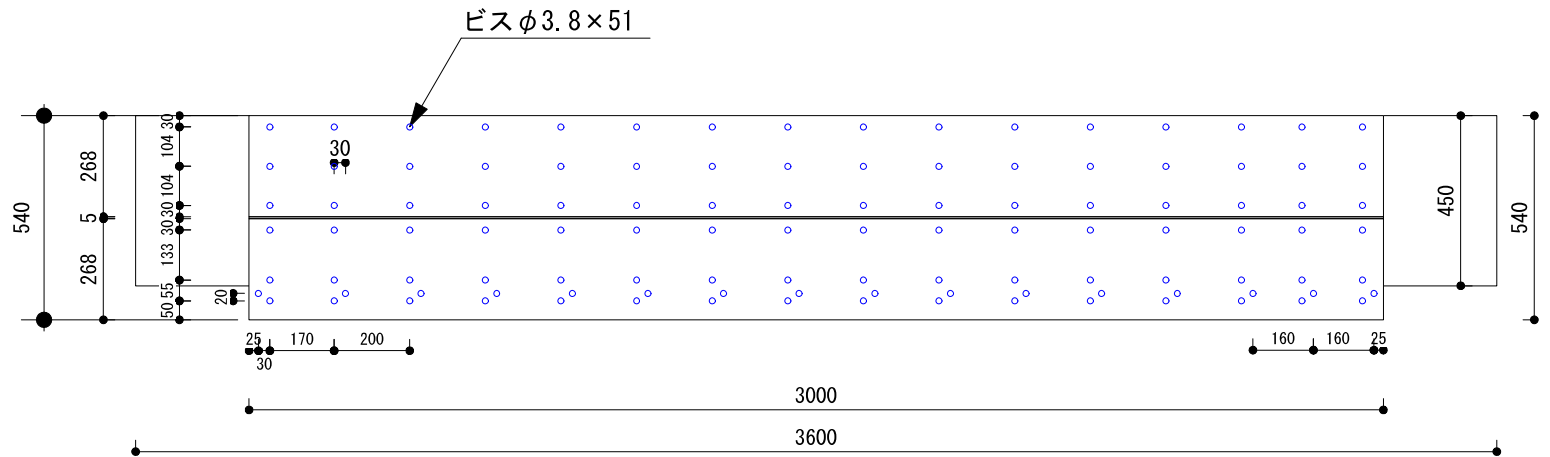
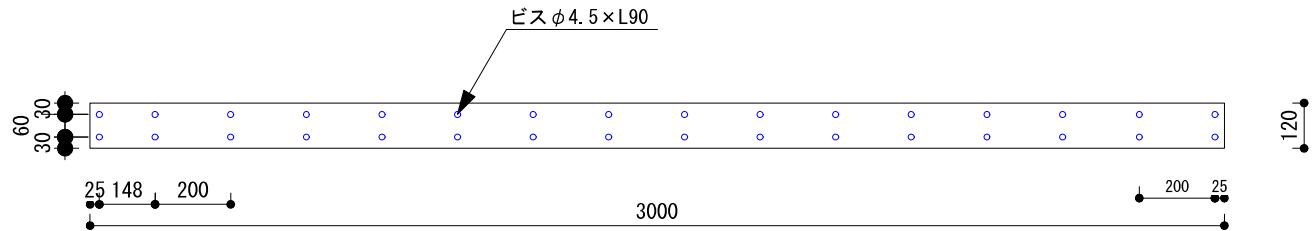


図1 断面図(梁)
(荷重支持部材120x450)

側面 割付図
難燃薬剤処理LVL厚60



底面下張材 割付図
難燃薬剤処理LVL厚60



底面上張材 割付図
難燃薬剤処理LVL厚30

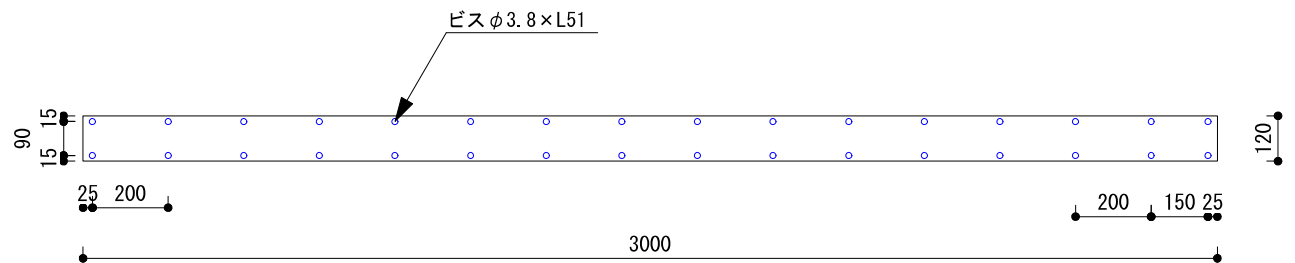


図2 被覆材ビス位置 (120 x 450梁)

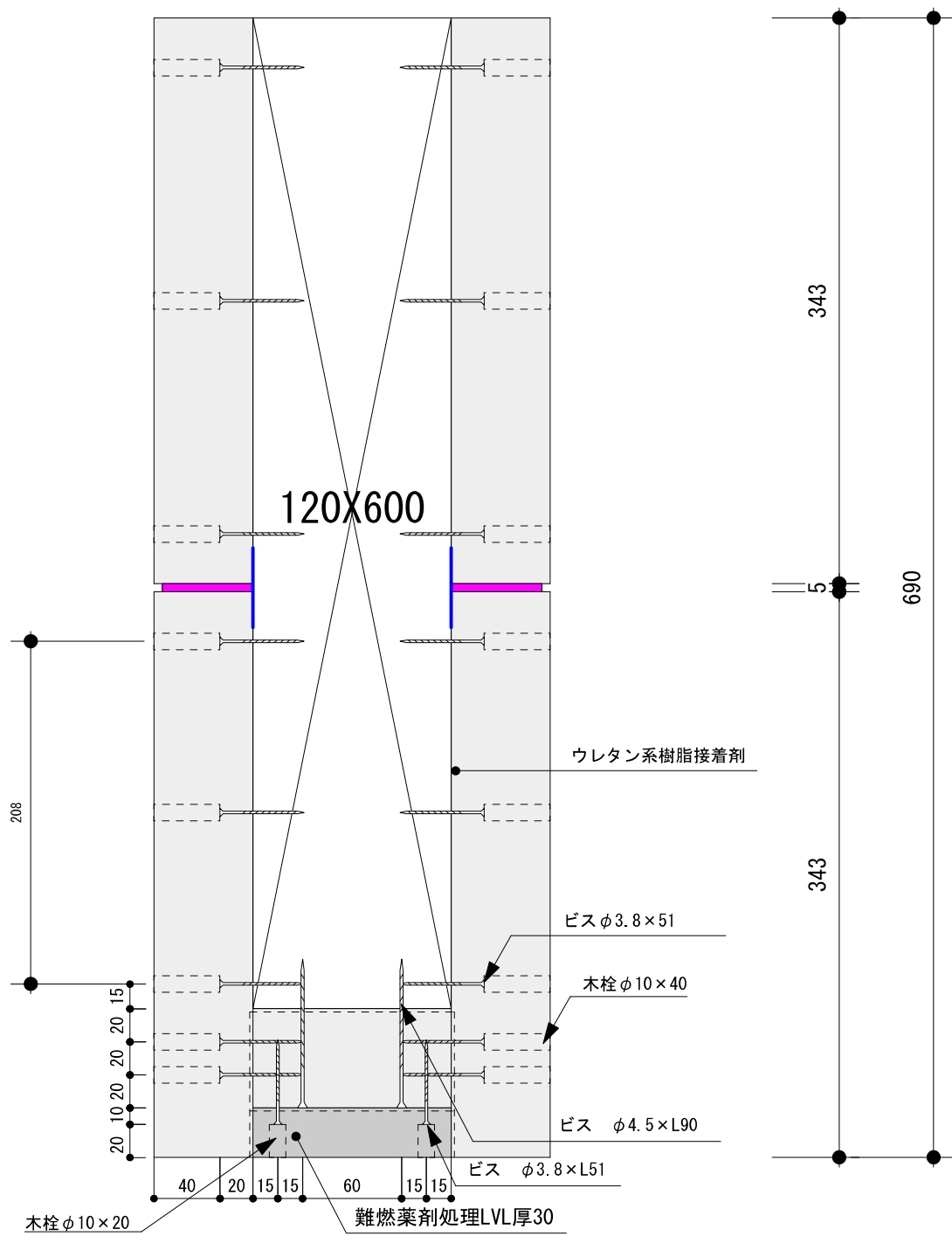
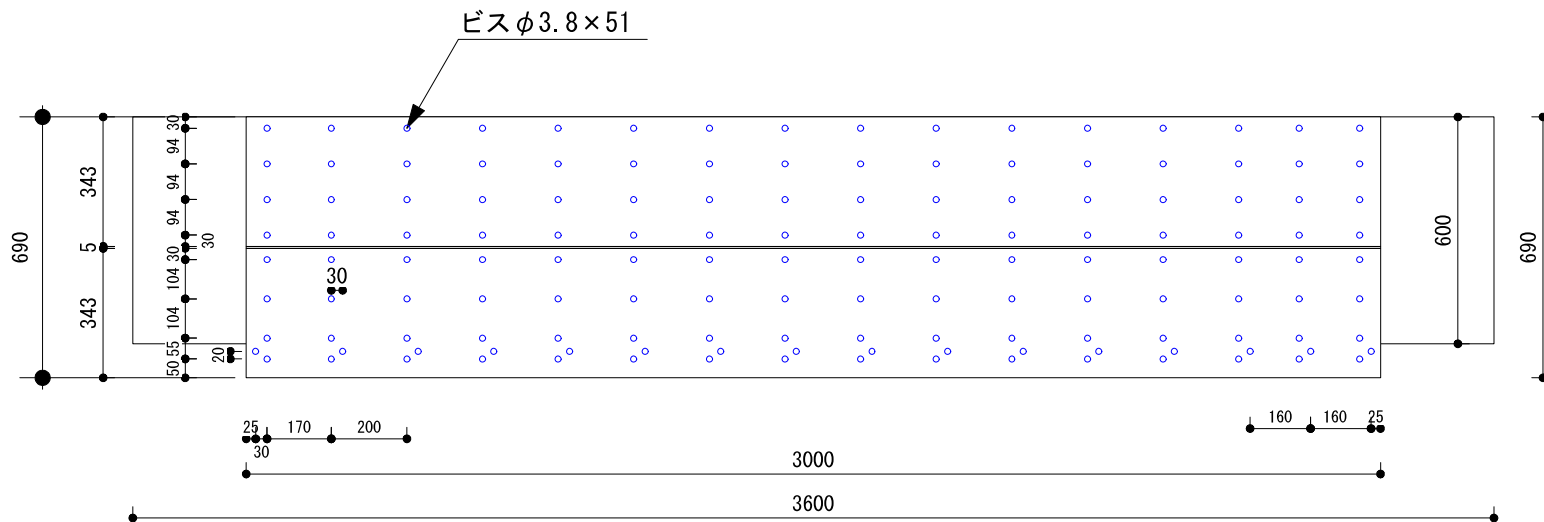
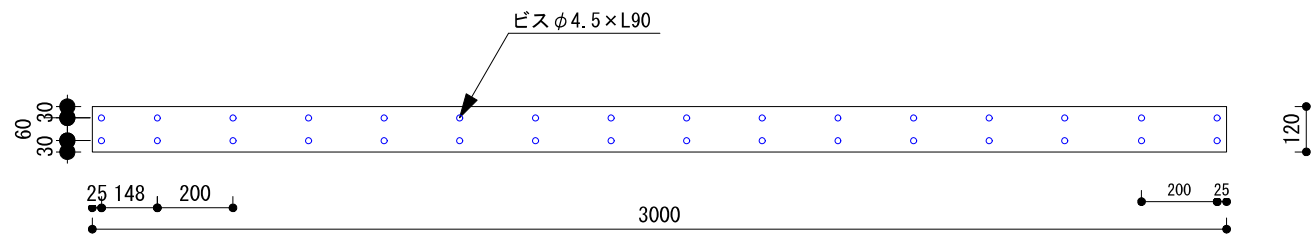


図1 断面図(梁)
 (荷重支持部材120x600)

側面 割付図
難燃薬剤処理LVL厚60



底面下張材 割付図
難燃薬剤処理LVL厚60



底面上張材 割付図
難燃薬剤処理LVL厚30

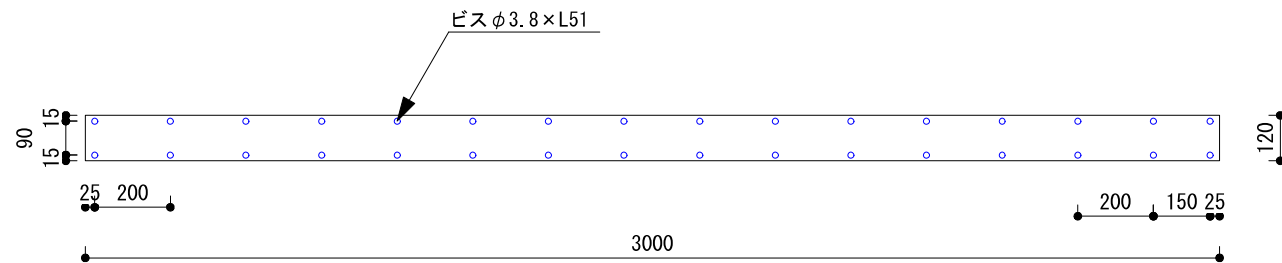


図2 被覆材ビス位置(120x300梁)

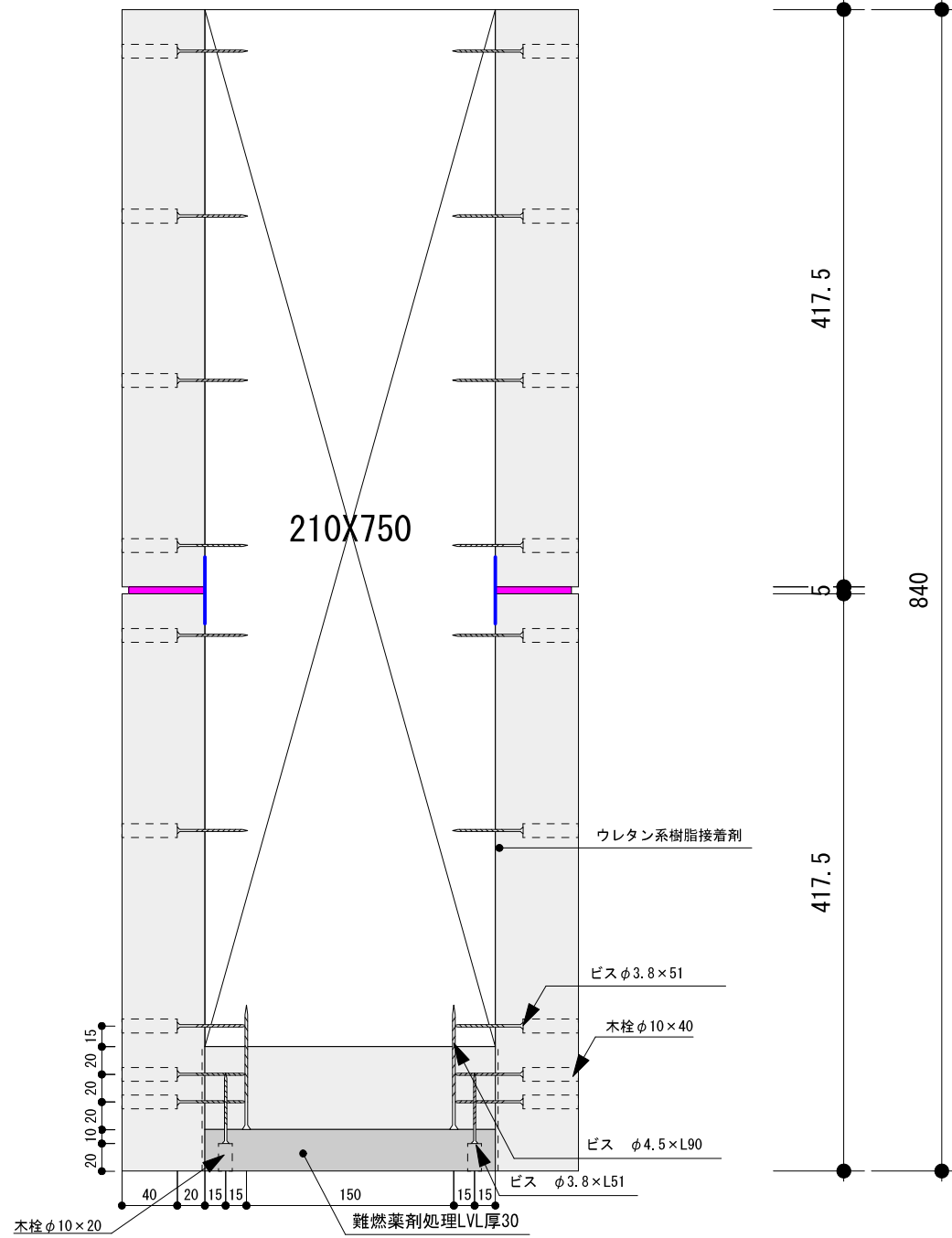
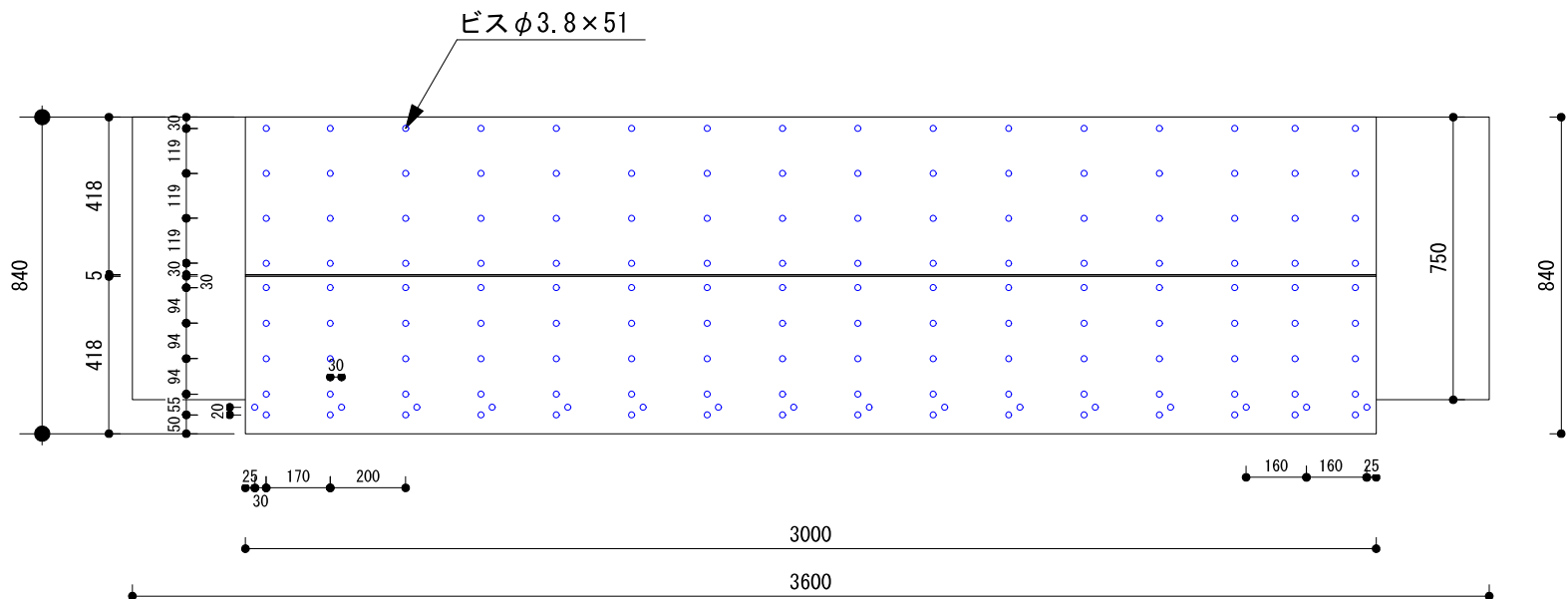


図1 断面図(梁)
(荷重支持部材210x750)

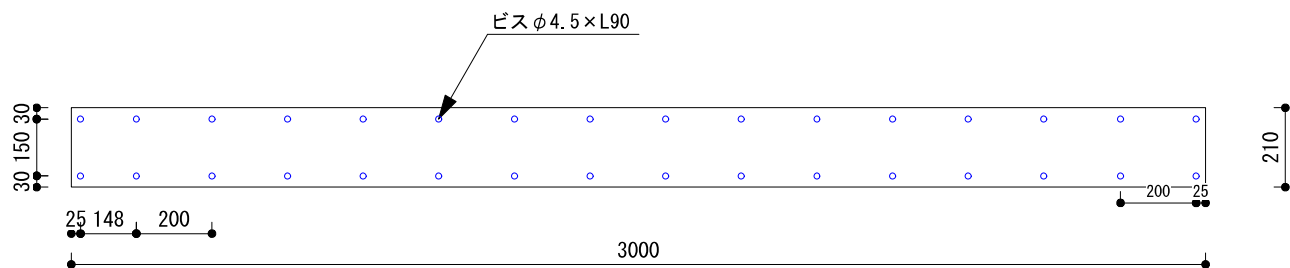
側面 割付図

難燃薬剤処理LVL厚60



底面下張材 割付図

難燃薬剤処理LVL厚60



底面上張材 割付図

難燃薬剤処理LVL厚30

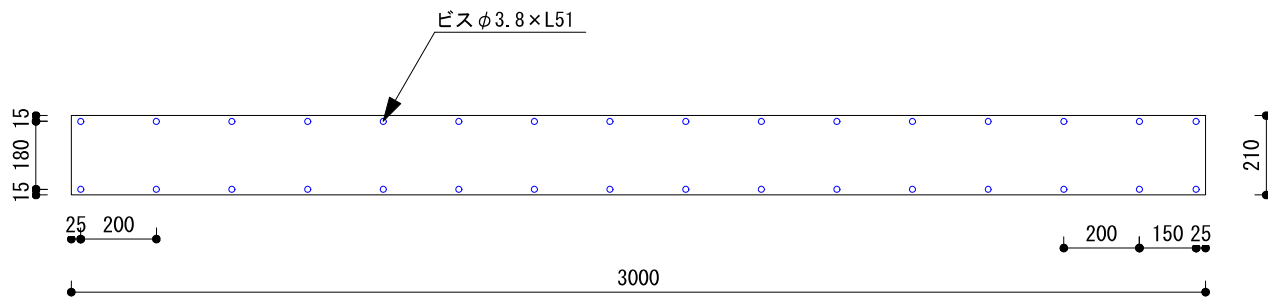


図2 被覆材ビス位置(210x750梁)

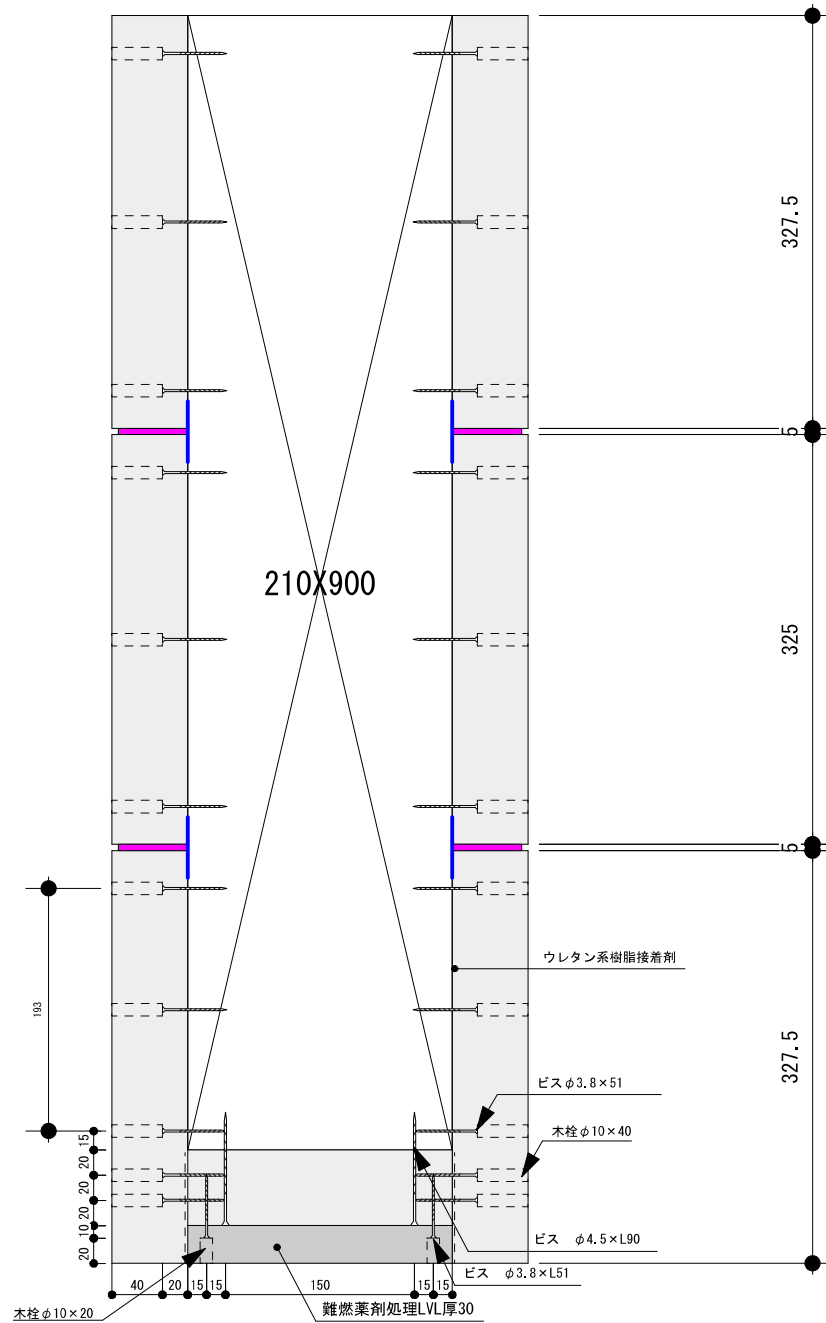
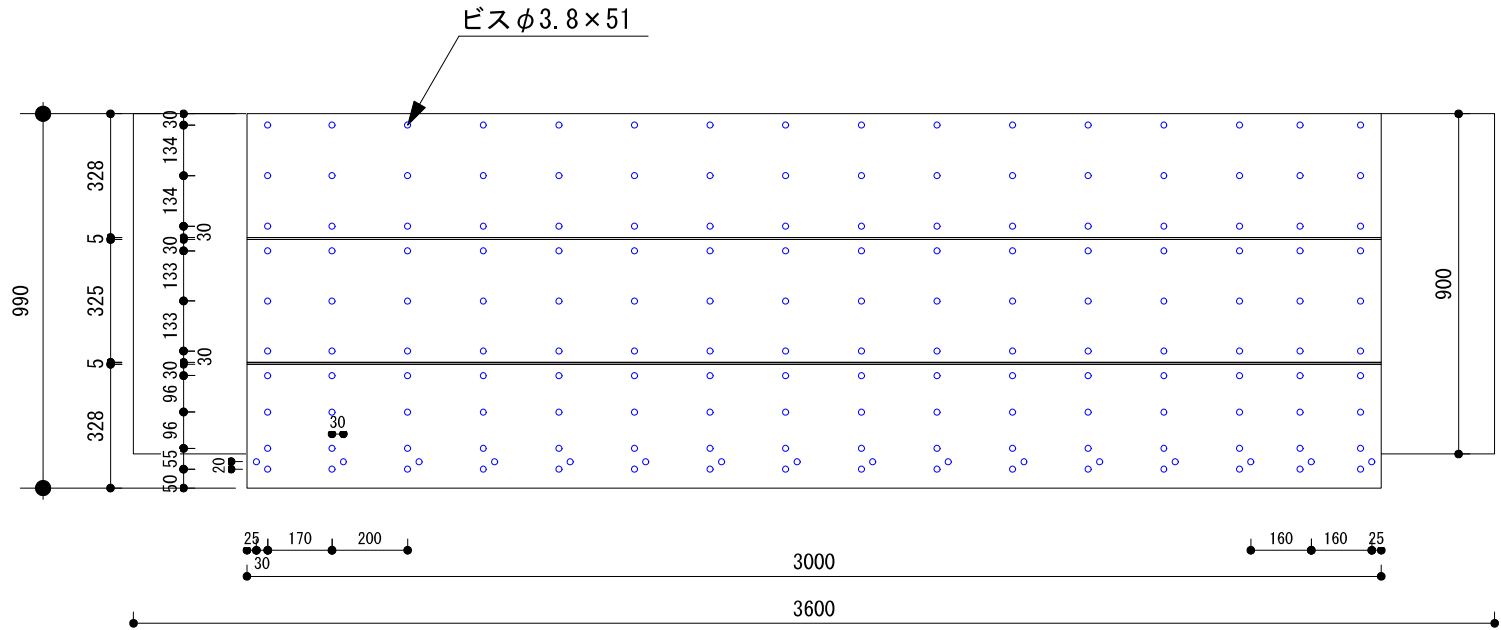
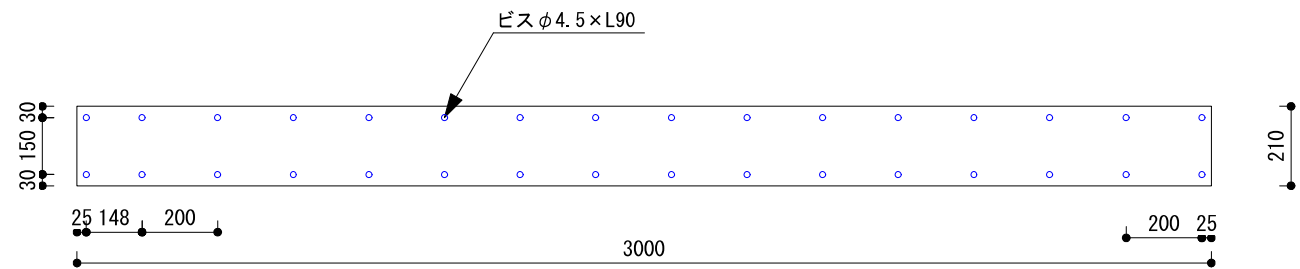


図1 断面図(梁)
(荷重支持部材210x900)

側面 割付図
難燃薬剤処理LVL厚60



底面下張材 割付図
難燃薬剤処理LVL厚60



底面上張材 割付図
難燃薬剤処理LVL厚30

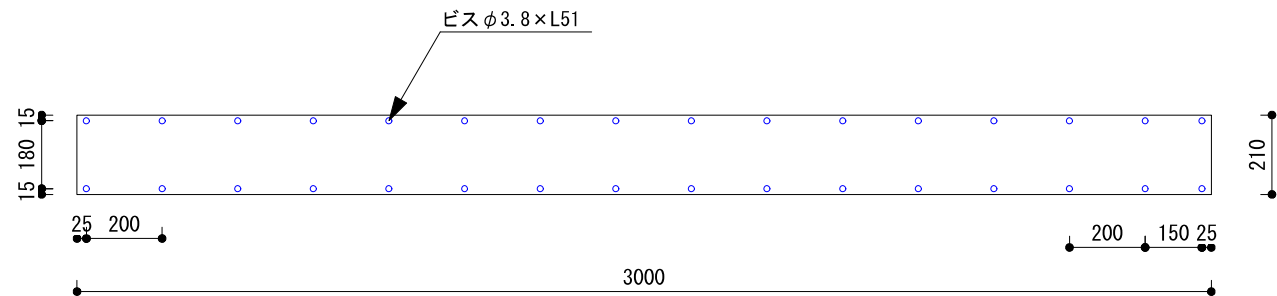


図2 被覆材ビス位置(210x900梁)

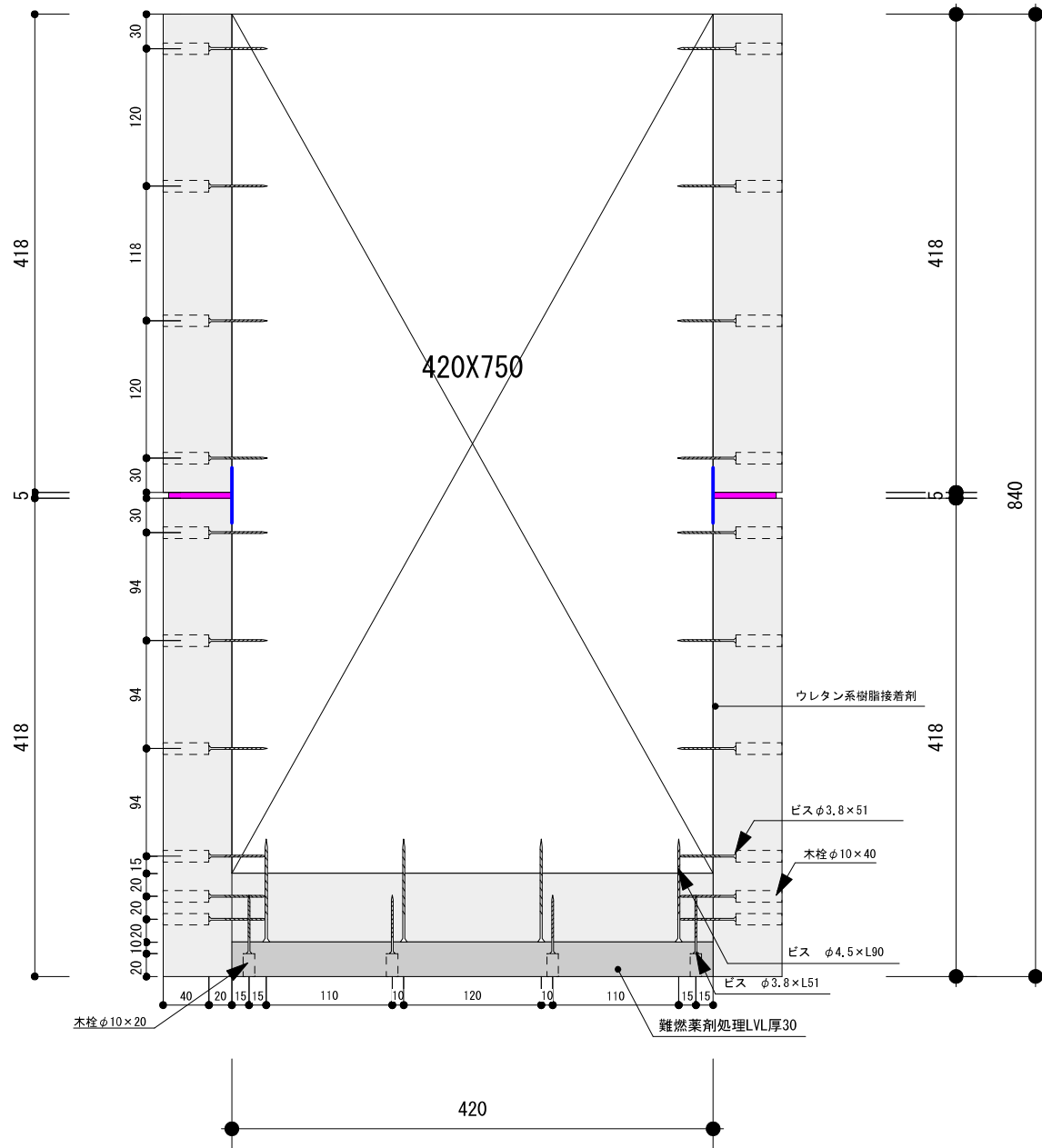
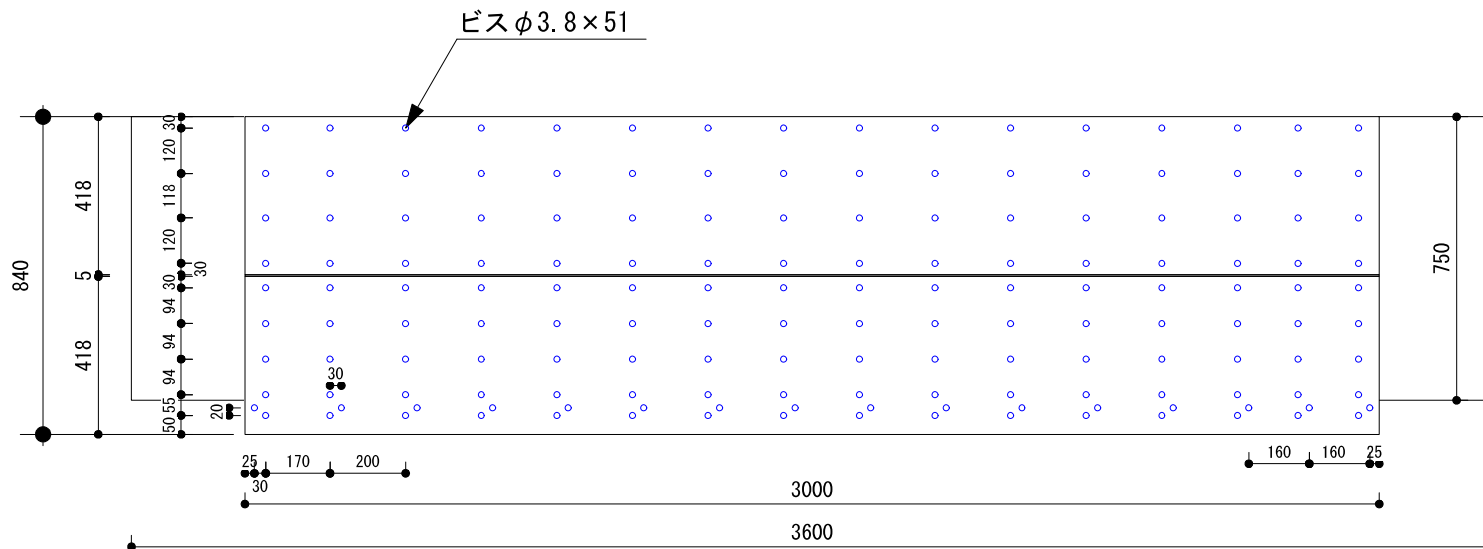
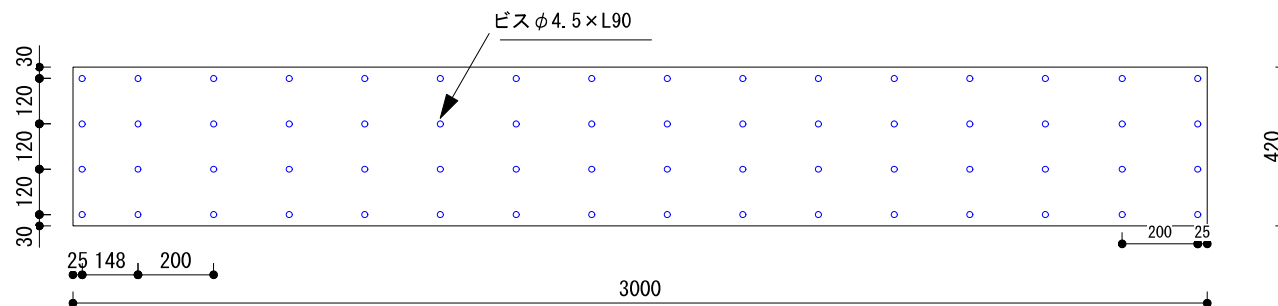


図1 断面図(梁)
(荷重支持部材420x750)

側面 割付図
難燃薬剤処理LVL厚60



底面下張材 割付図
難燃薬剤処理LVL厚60



底面上張材 割付図
難燃薬剤処理LVL厚30

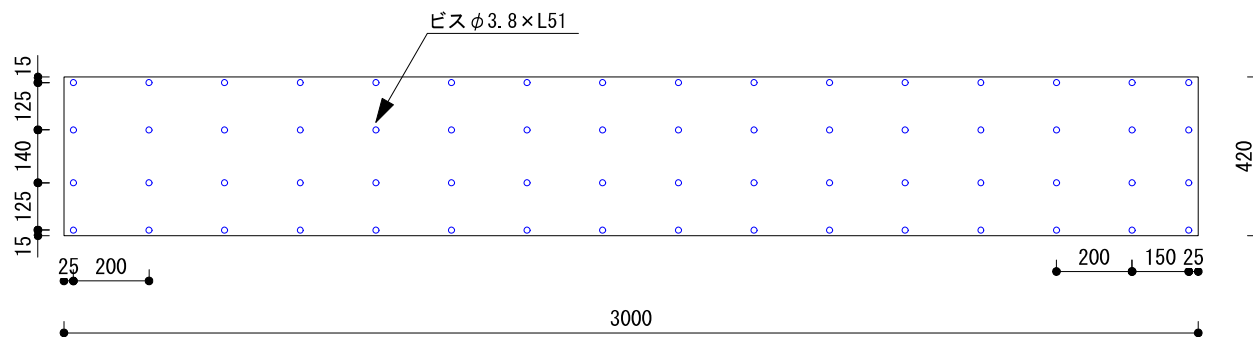


図2 被覆材ビス位置(420x750梁)

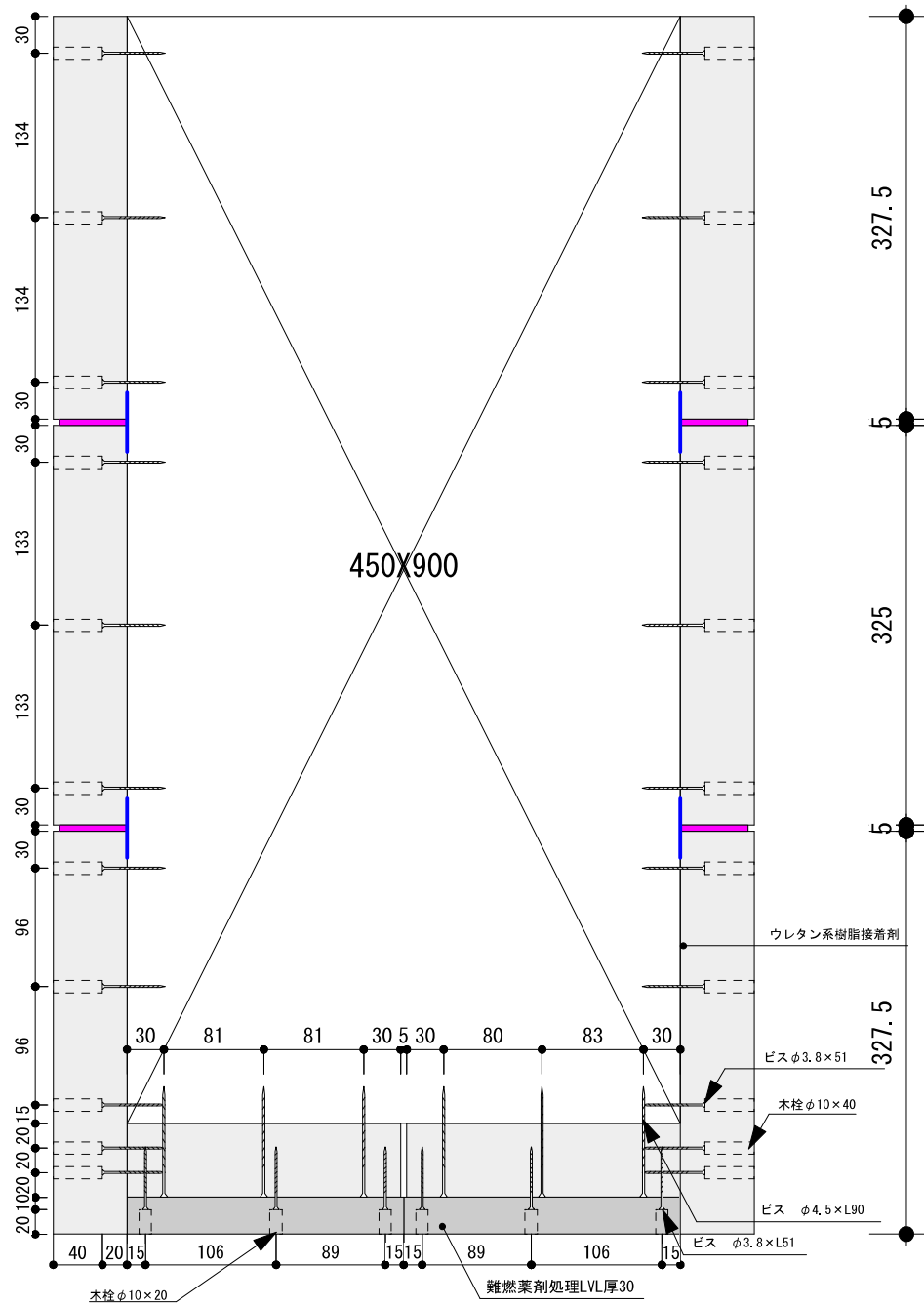
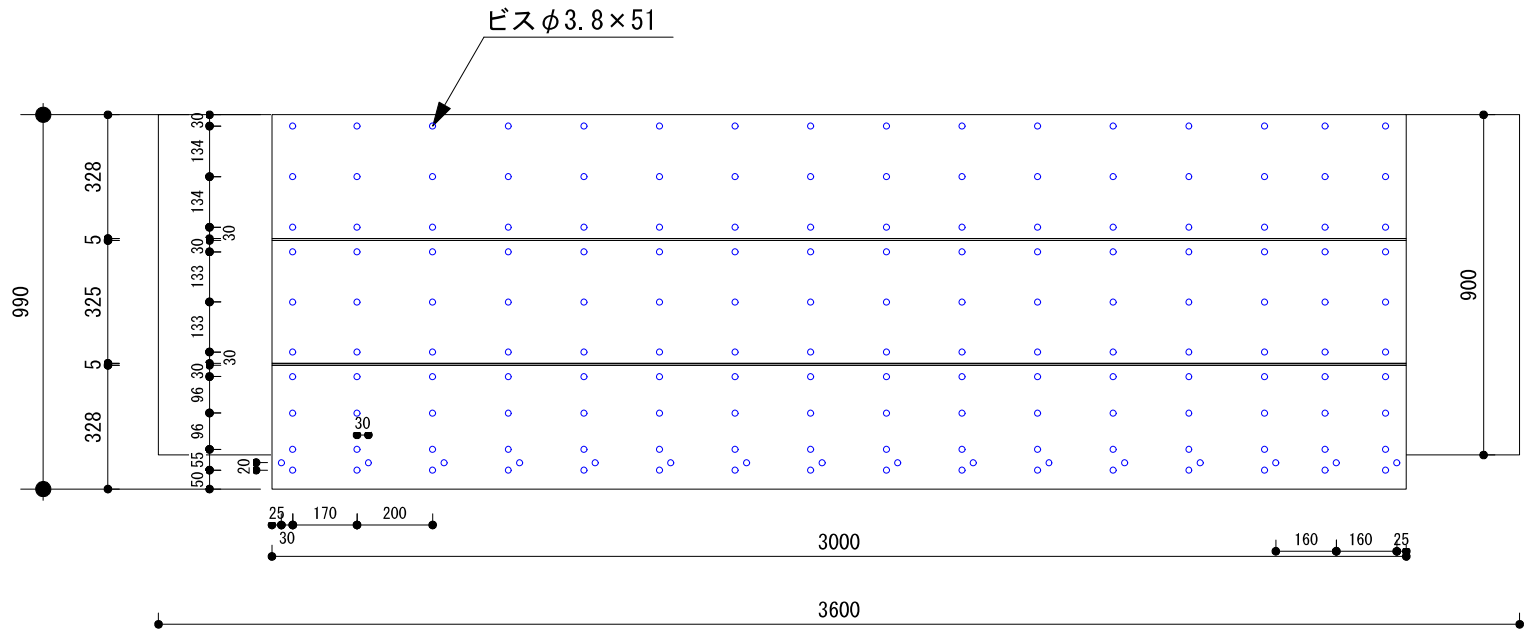
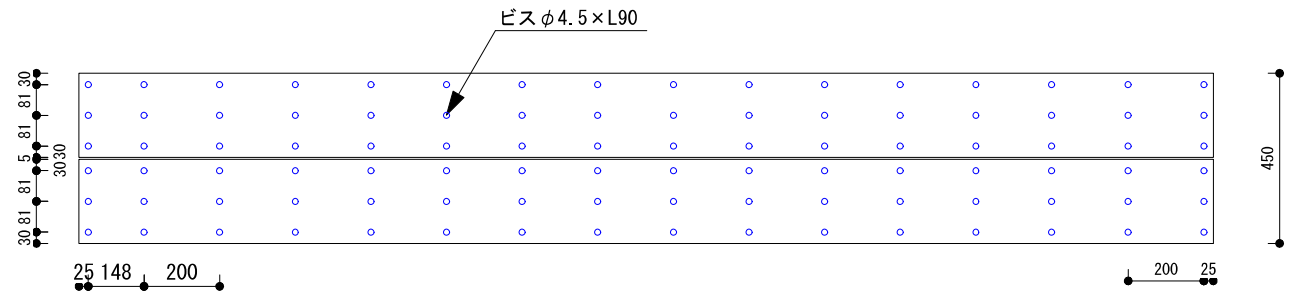


図1 断面図(梁)
(荷重支持部材450×900)

側面 割付図
難燃薬剤処理LVL厚60



底面下張材 割付図
難燃薬剤処理LVL厚60



底面上張材 割付図
難燃薬剤処理LVL厚30

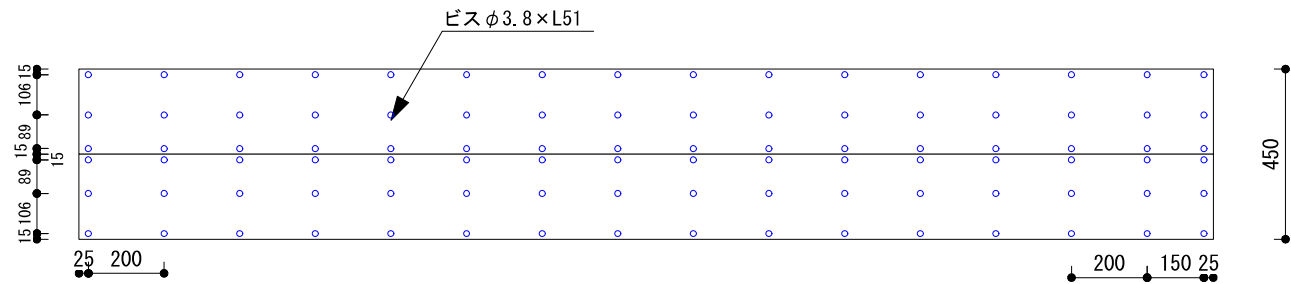
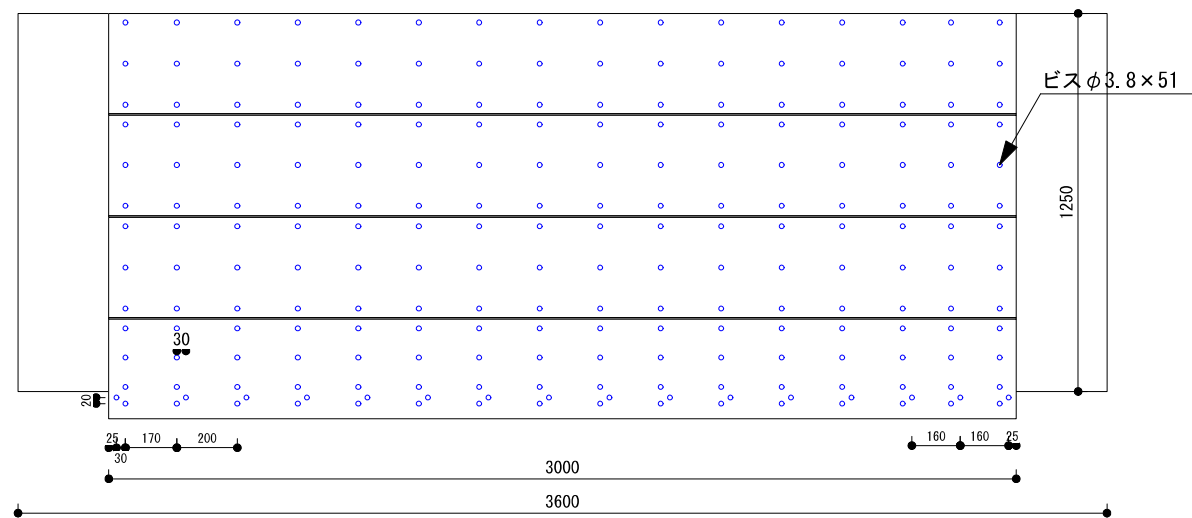
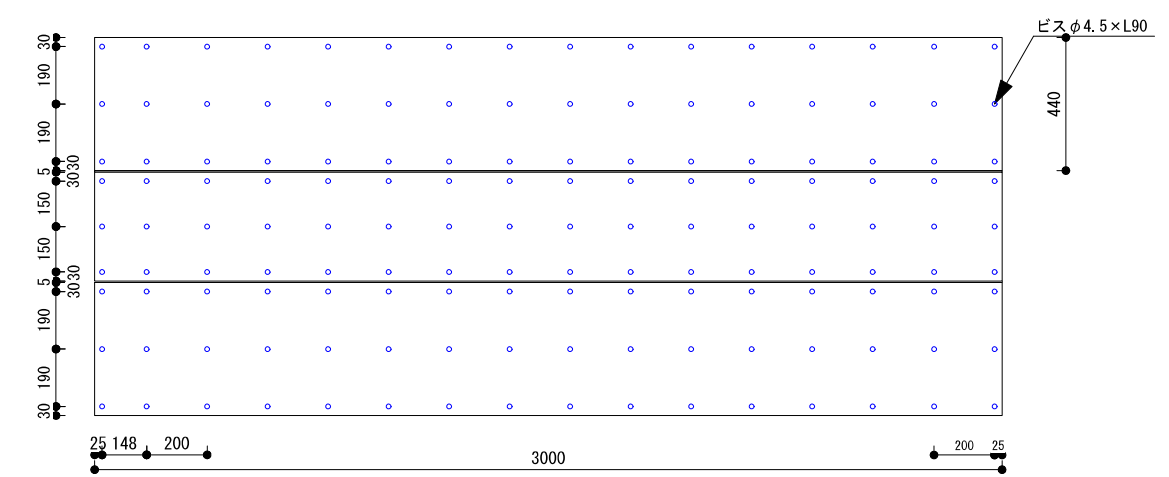


図2 被覆材ビス位置(450x900梁)

側面 割付図
難燃薬剤処理LVL厚60



底面下張材 割付図
難燃薬剤処理LVL厚60



底面上張材 割付図
難燃薬剤処理LVL厚30

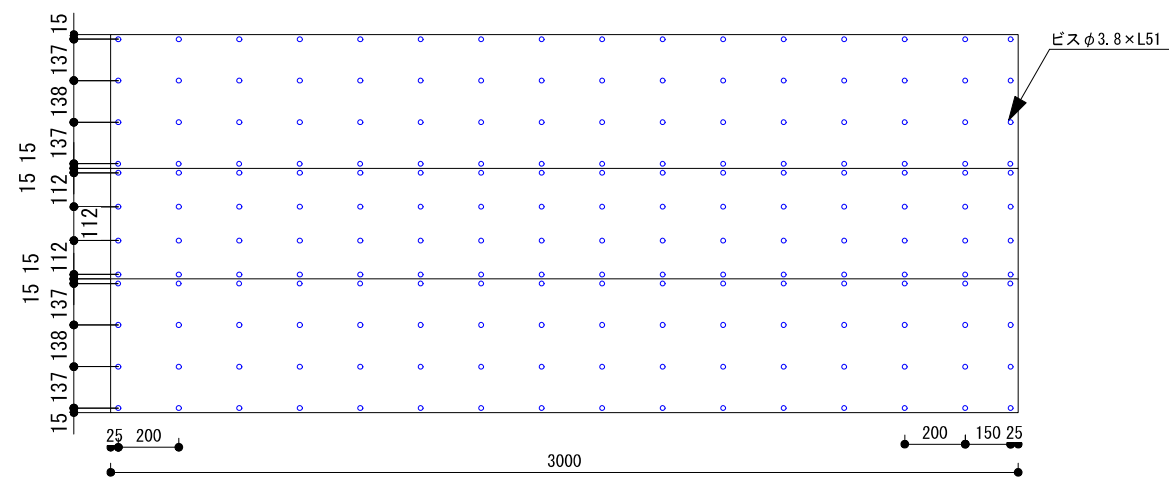


図2 被覆材ビス位置 (1250x1250梁)